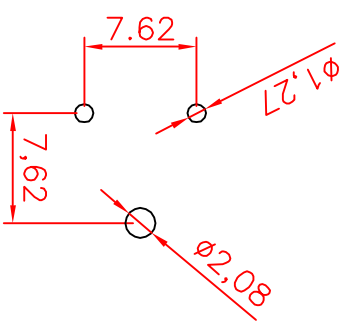
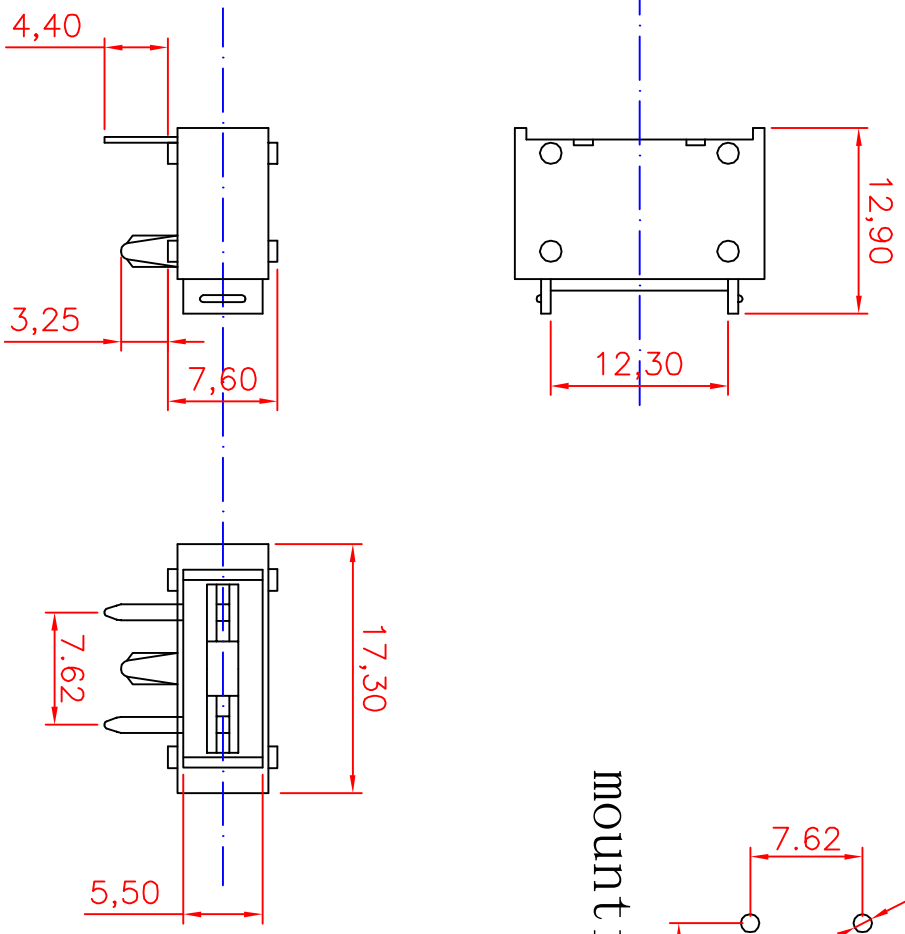


DRAWING REVISIONS				
REV	S/N	DESCRIPTION	APPROVED	DATE
A	20080210-09	ORIGINAL RELEASE		



mounting pattern



NOTES: UNLESS OTHERWISE SPECIFIED.

1. -Applicable: For MINI blade fuse.
2. Electrical: Rated for current up to 32V/15A
3. Insulating Base body: PA +30%GP  
Contact: Brass with Tin plated

**Dongguan GongFu Electronics Co., Ltd.**

<b>RoHS COMPLIANT</b>	<b>PCB Mount Fuseholder</b>	<b>CUSTOMER</b>
UNLESS OTHERWISE STATED	<b>FOR MINI AUTO FUSE</b>	

<b>WALL THICKNESS</b>	<b>MM</b>	<b>MM</b>
LINEAR .XXX	± 0.15	MM
ANGULAR .XXX	± 0.05	MM
DEALT ANGLE/SIDE	± 0.5 DEG	DSSGN
BURR & FLASH	0.5 ° MAX	DFTS
BREAK CORNERS	0.10 MAX	CHKD
PARTING LINE SWITCH	0.20 R MAX	APPD
	0.05 MAX	

SCALE	free	REV
SHEET	1 OF 1	A
PART NO.	GF153007	